

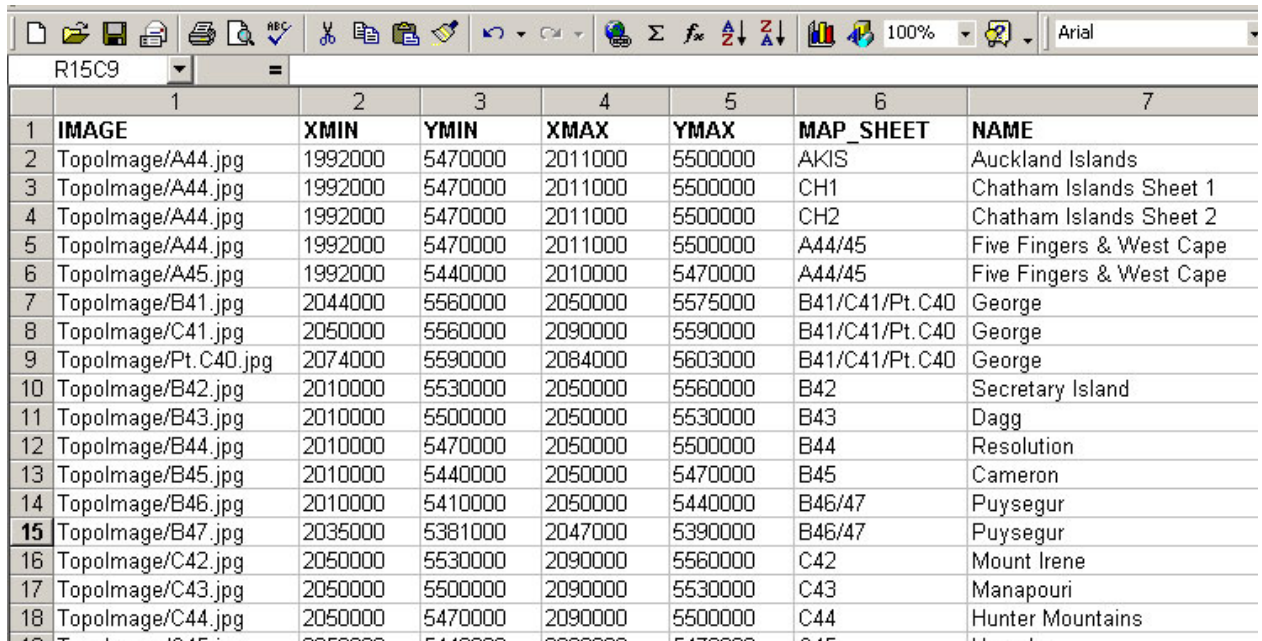
Create a Raster-dBase-Table for the Topographic Maps

Version: 1

Dated: 15/12/2005

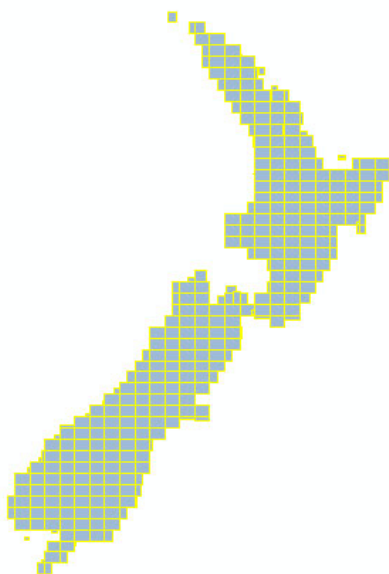
Author: Tobias Hoernle

1. Open the Excel file with the maps and their locations
2. Make sure, that every map is in one row

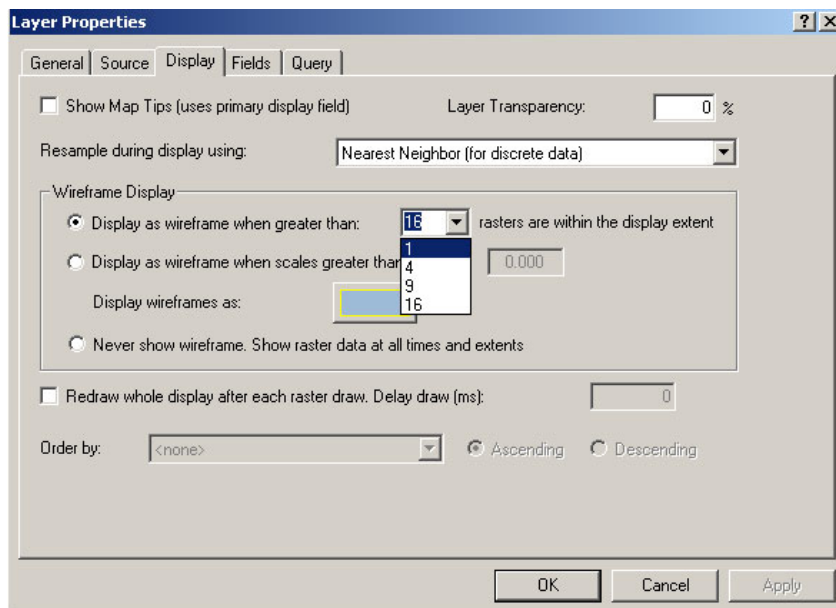


	1	2	3	4	5	6	7
1	IMAGE	XMIN	YMIN	XMAX	YMAX	MAP_SHEET	NAME
2	Topolmage/A44.jpg	1992000	5470000	2011000	5500000	AK1S	Auckland Islands
3	Topolmage/A44.jpg	1992000	5470000	2011000	5500000	CH1	Chatham Islands Sheet 1
4	Topolmage/A44.jpg	1992000	5470000	2011000	5500000	CH2	Chatham Islands Sheet 2
5	Topolmage/A44.jpg	1992000	5470000	2011000	5500000	A44/45	Five Fingers & West Cape
6	Topolmage/A45.jpg	1992000	5440000	2010000	5470000	A44/45	Five Fingers & West Cape
7	Topolmage/B41.jpg	2044000	5560000	2050000	5575000	B41/C41/Pt.C40	George
8	Topolmage/C41.jpg	2050000	5560000	2090000	5590000	B41/C41/Pt.C40	George
9	Topolmage/Pt.C40.jpg	2074000	5590000	2084000	5603000	B41/C41/Pt.C40	George
10	Topolmage/B42.jpg	2010000	5530000	2050000	5560000	B42	Secretary Island
11	Topolmage/B43.jpg	2010000	5500000	2050000	5530000	B43	Dagg
12	Topolmage/B44.jpg	2010000	5470000	2050000	5500000	B44	Resolution
13	Topolmage/B45.jpg	2010000	5440000	2050000	5470000	B45	Cameron
14	Topolmage/B46.jpg	2010000	5410000	2050000	5440000	B46/47	Puysegur
15	Topolmage/B47.jpg	2035000	5381000	2047000	5390000	B46/47	Puysegur
16	Topolmage/C42.jpg	2050000	5530000	2090000	5560000	C42	Mount Irene
17	Topolmage/C43.jpg	2050000	5500000	2090000	5530000	C43	Manapouri
18	Topolmage/C44.jpg	2050000	5470000	2090000	5500000	C44	Hunter Mountains

3. In the Image column is the location of the images
4. Export the file as a dBase-Table
5. Open ArcView and Import it



6. In the properties you can change when the images should be displayed as wireframes



7. You see, which images are available

